

WizeEnvironment

TUCK SHOPS

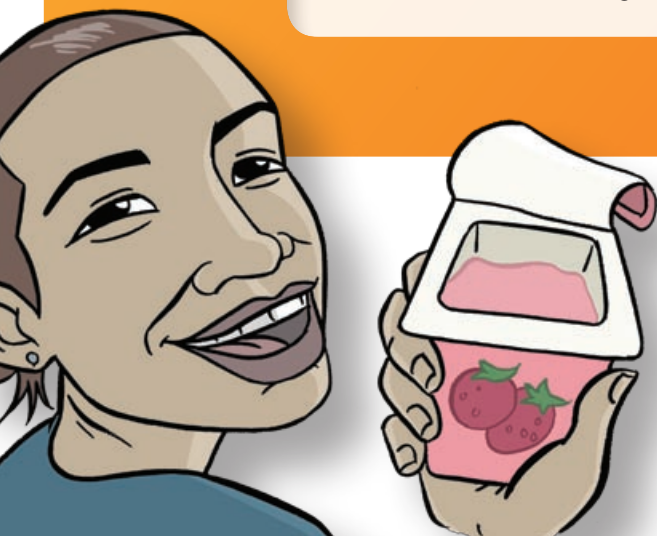


We are here to provide free support to Secondary Schools Auckland-wide, and improve the nutrition environment for students in line with the 2007 NZ Food and Beverage Classification system.

What we offer:

- ✓ Nutritionist/facilitator support
- ✓ Environment scan and Tuck shop assessment
- ✓ Face-to-face and telephone advice
- ✓ Support for external audit
- ✓ Policy development advice
- ✓ Documentation and resources
- ✓ Reference to websites with tools and recipes
- ✓ DPT Certificate of compliance
- ✓ Improvement advice

*** Fully funded by MOH ***



Contact

School co-coordinator

Phone: (09) 2739650

E-mail: sue@dpt.org.nz

Website: www.dpt.org.nz

